

Recover Data for FAT & NTFS Software

Recover Data for FAT/NTFS

Recover Data for FAT & NTFS is the best Windows data recovery software. It can recover data lost from Windows hard drive that has been lost its data due to accidental deletion. When FAT & NTFS partition has been damaged then it scans both the partition completely and shows the preview of all recovered data. This Recover Data for FAT/NTFS is inbuilt with advanced GFETch (Guided File Excavation Technology) to retrieve lost data in fast, easy & simple way.

Here are two recovery operation steps:

These recovery operation steps provide the complete solution. [Get Back for FAT & NTFS](#) search the file system information and calculate all things for maximum recovery. Recover Data finds all partitions of the computer/Laptop. So there is two recovery modes and first run the **Normal mode**. This mode quickly scans the whole FAT & NTFS partition and displays the recovered files. In the most of the cases this mode perfectly solves the problem if it fails to show your lost files & folders in any case. Then choose **Exhaustive mode** for better recovery results. This mode deeply scans the partition sector by sector because it uses our unique recovery technology GFETch. There is one more mode and that is **Raw mode**, where users get the option to select a particular files extension. All above discussed modes are safe in use neither it will harm to your existing data or overwrite on them, it give the option to save the recovery data at your selected path. And after the save of recovered data you will again be able to work on it.

Features of Recover Data for FAT/NTFS:

- ¾ Fast & easy recovery process with advanced techniques.
- ¾ Recover Data even when even bad sector has been corrupted
- ¾ Unique Guided File Excavation Technology (GFETch)
- ¾ Four types of different recovery methods
- ¾ Recovery is possible from any types of storage media
- ¾ Well guided steps to recover lost data
- ¾ Invented by experienced data recovery experts
- ¾ Process of data recovery is smooth on FAT & NTFS based on all Windows version (2000, 2003, Vista, XP, 2007 & 2008).
- ¾ Recover files after MFT, MBR & FAT corruption

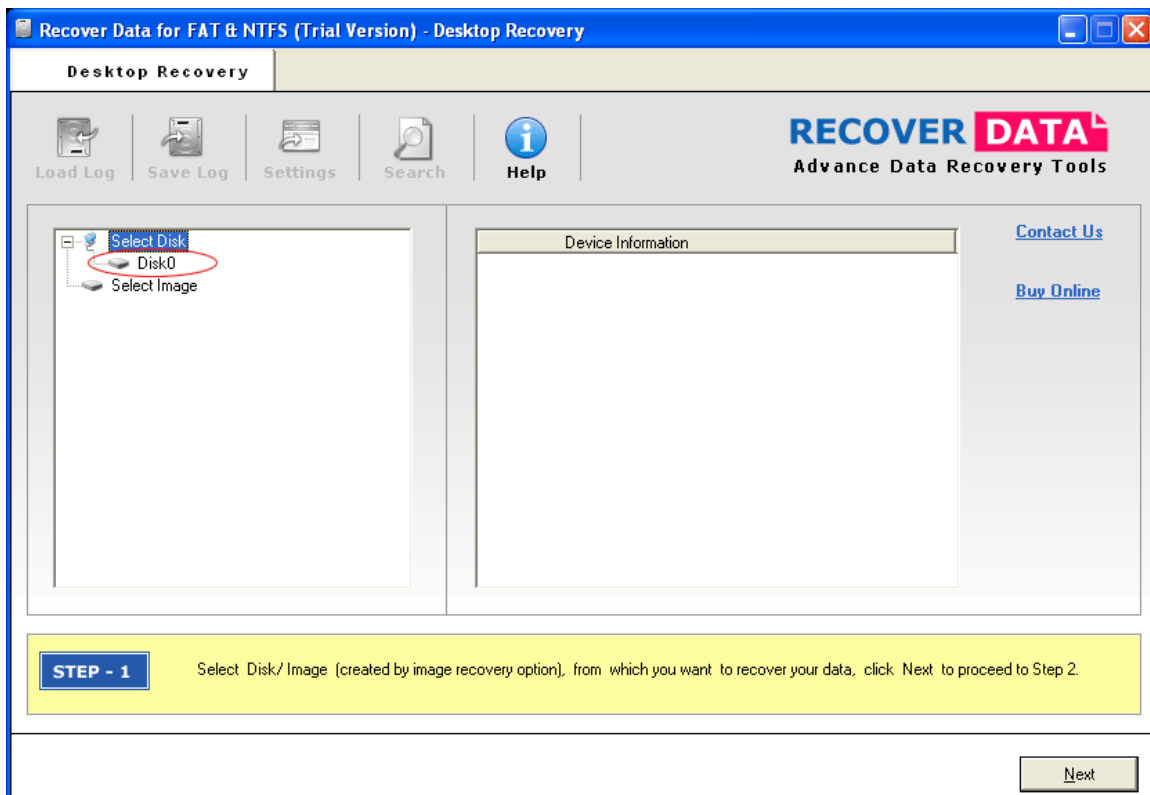
In these situations our software works well:

- ¾ Virus attack
- ¾ Bad sector
- ¾ Accidental deletion
- ¾ Partition formatting
- ¾ Power surge
- ¾ Operating system not booting
- ¾ Hard disk is not shown or accessible
- ¾ Corruption on hard drive, partition or operating system

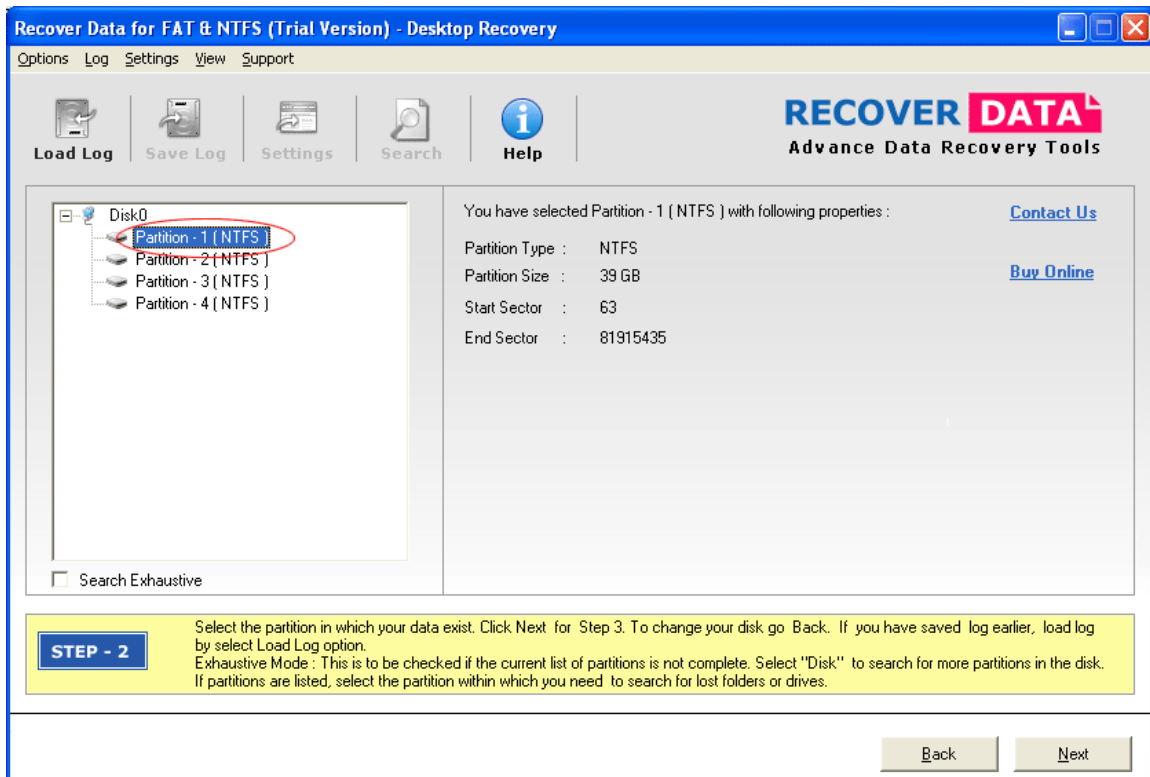
How to use Recover Data for FAT & NTFS?

Normal mode: This normal mode is quick & fast mode to recover deleted/lost data from Windows OS. This mode work in most of the cases and solve the data loss situations.

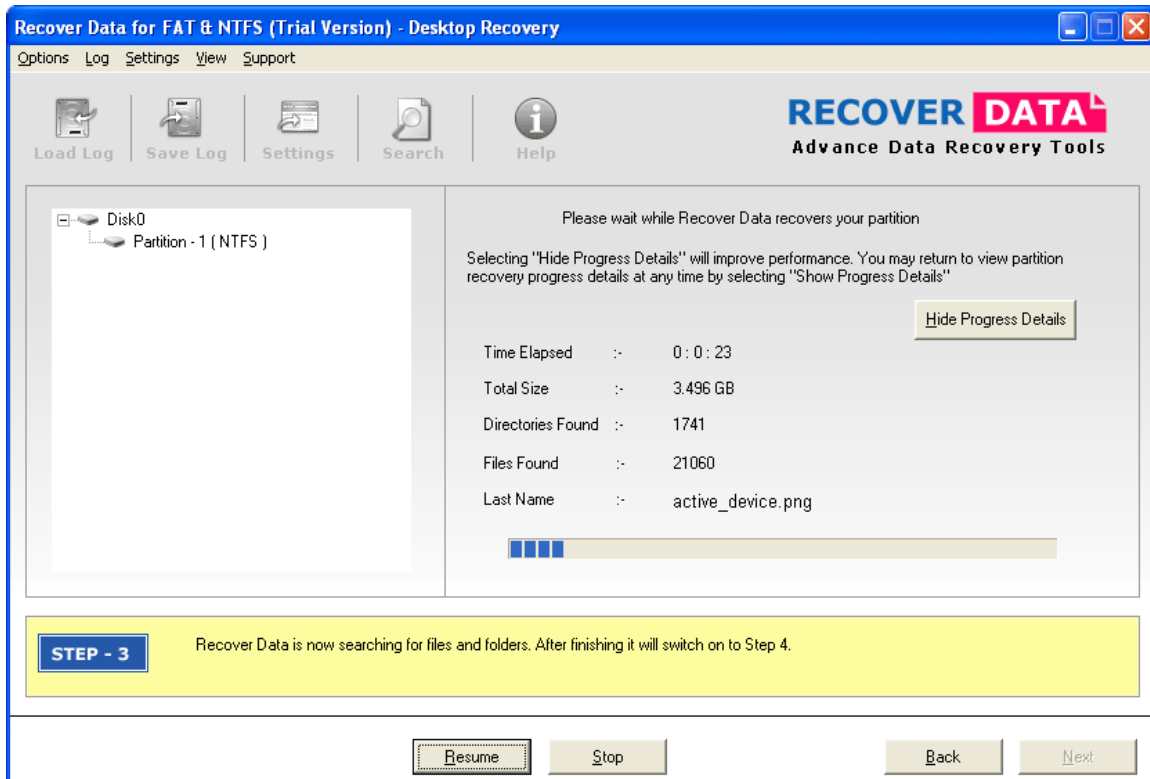
At the first step select the **Disk 0** and then click on next button to go on second step.



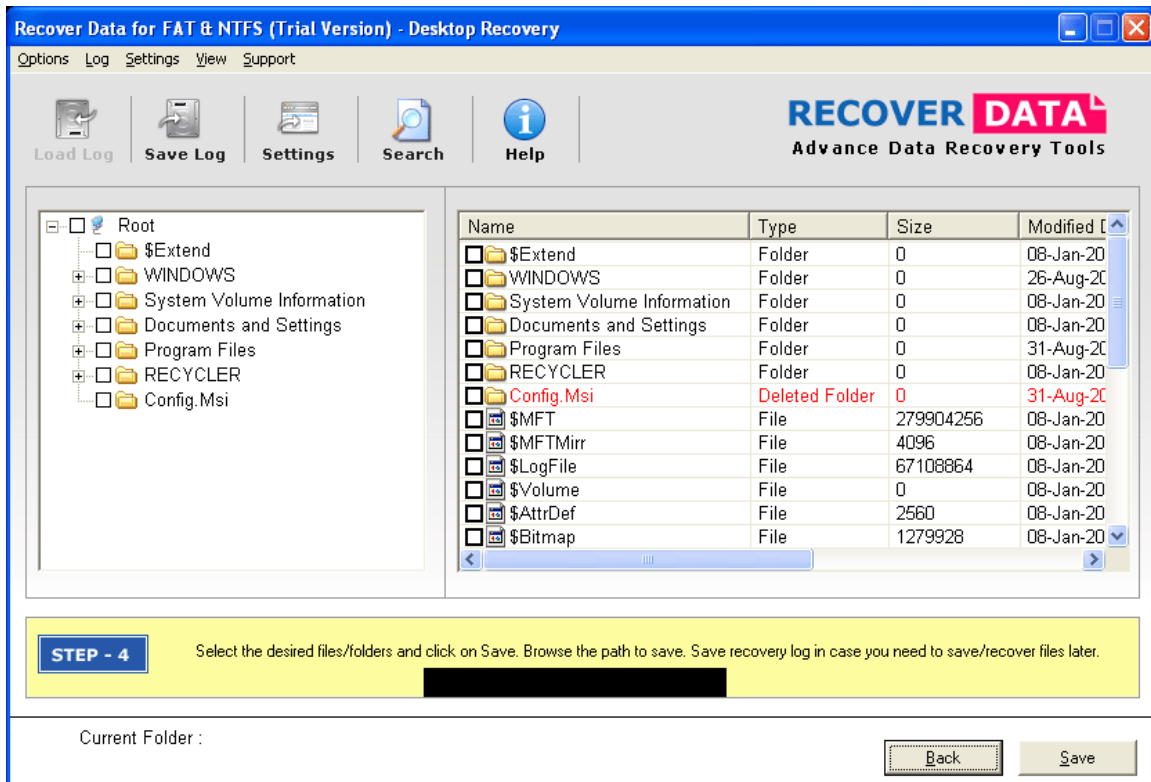
At the second step select the partition and after selecting click on next button and then click the next button. Software will start searching for lost data from selected partition.



In this third step software is now searching lost files & folders, after finishing the searching click on next button to switch with four and last step.

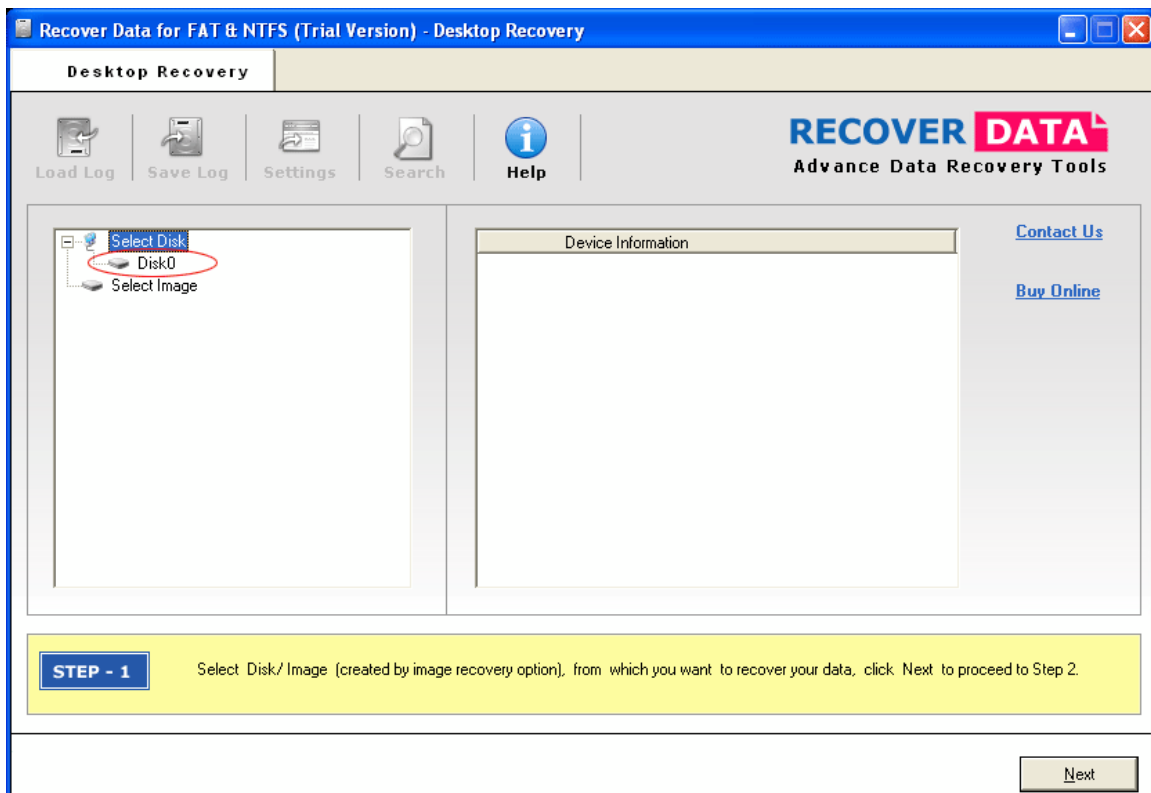


At this fourth step software will show the recovered files in red color. If you want to retrieve the files, click on them. After the selection of the recovered files, click on the save button.

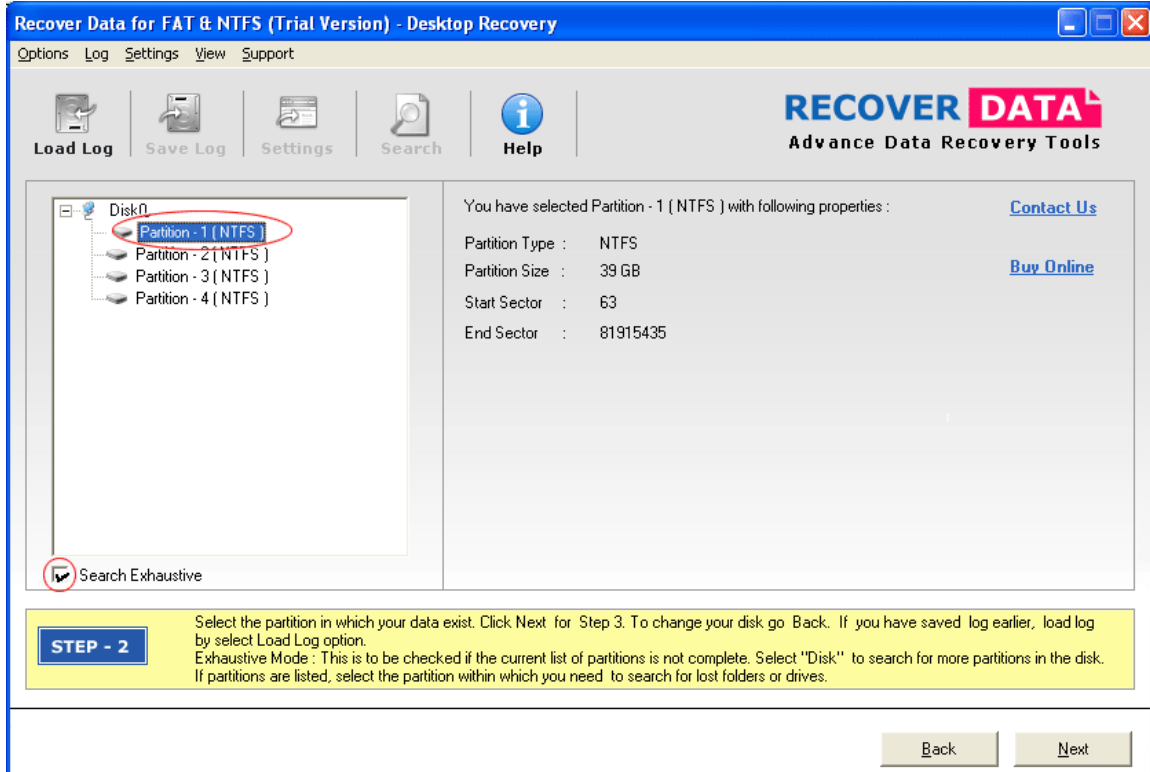


Exhaustive mode: This exhaustive mode deeply scans the hard drive to recover lost data by using best techniques which we used in it.

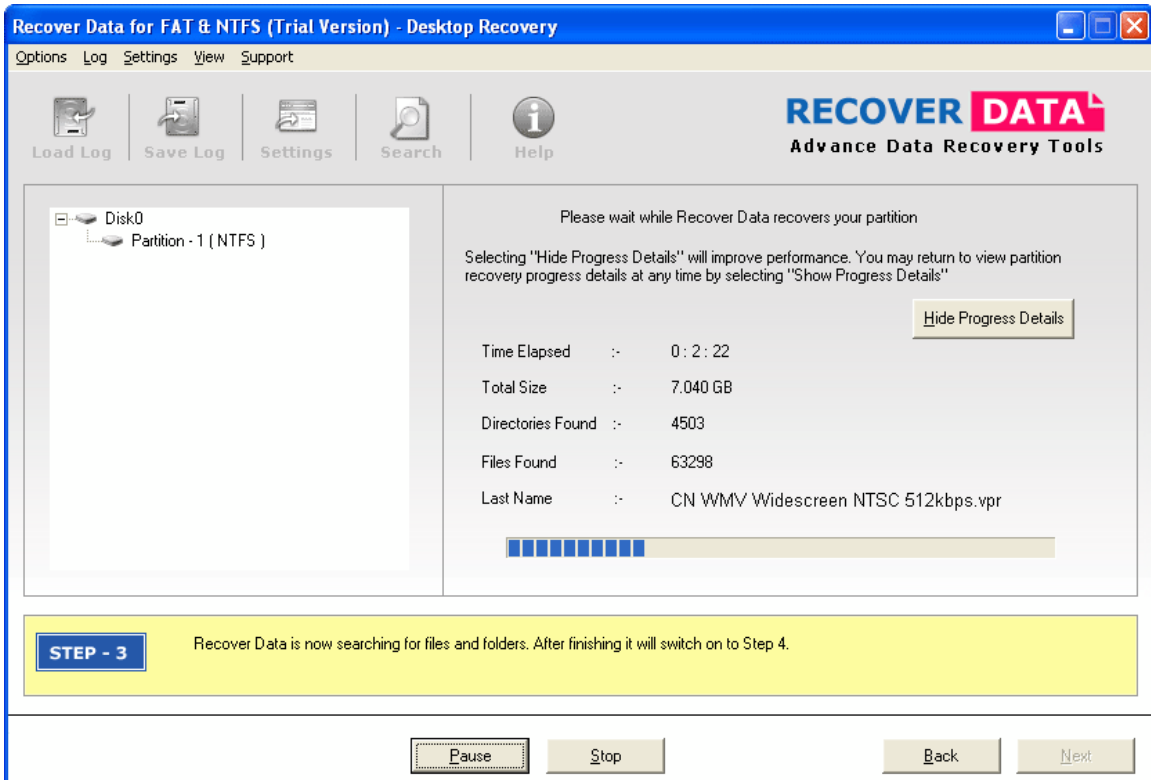
At the first step select the **Disk 0** and then click on next button to go on second step.



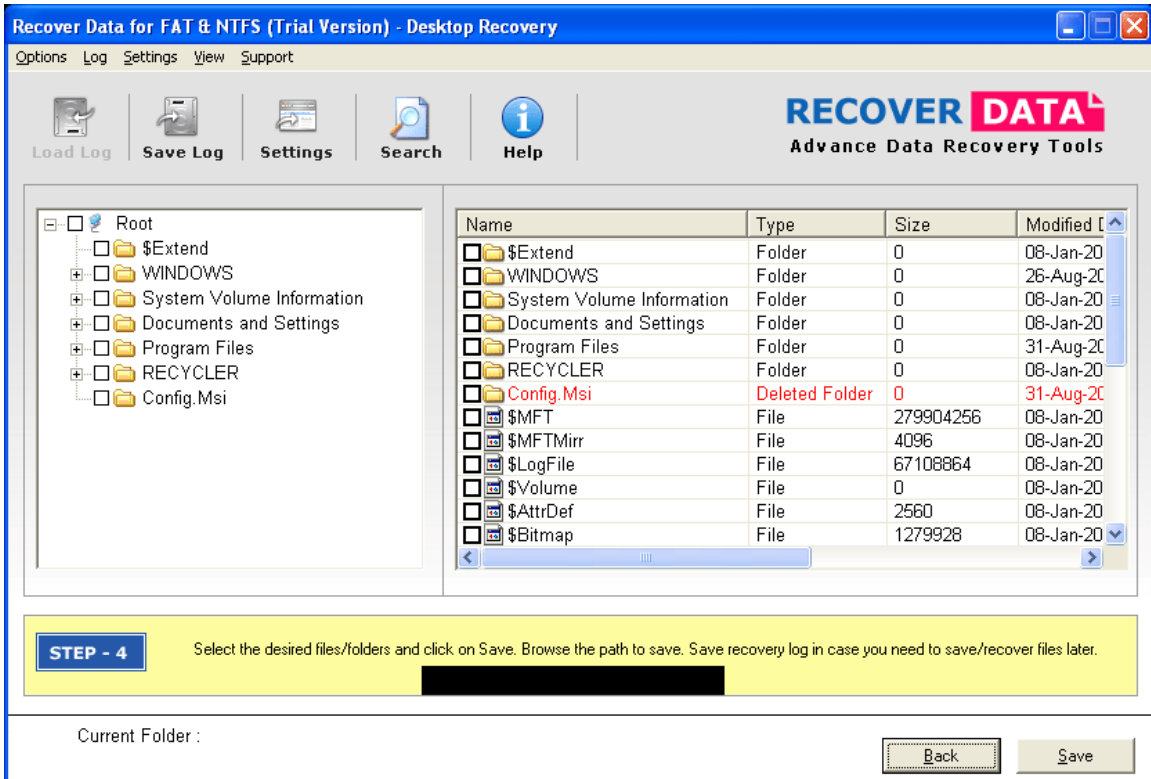
At the second step select the partition and check on the search exhaustive box which left side below the partition to select this mode after that click on next button. Software will start its deep scanning to recover maximum data in which it normal mode was fail.



At this third step software will show the recovered files in red color. Then select the files or folders which you want to recover. After the selection of the files, click on the save button.



At this fourth step software will show the recovered files in red color. Click on recovered files and then click on the save button.



System Requirement (Recommended):

- $\frac{3}{4}$ Operating System: Win 98/2000/XP/2003/2007 & 2008
- $\frac{3}{4}$ Minimum 64Mb RAM (recommended 128Mb)
- $\frac{3}{4}$ Minimum 20Mb free disk space required

File System Supported: FAT12/FAT16/FAT 32, NTFS, and NTFS5